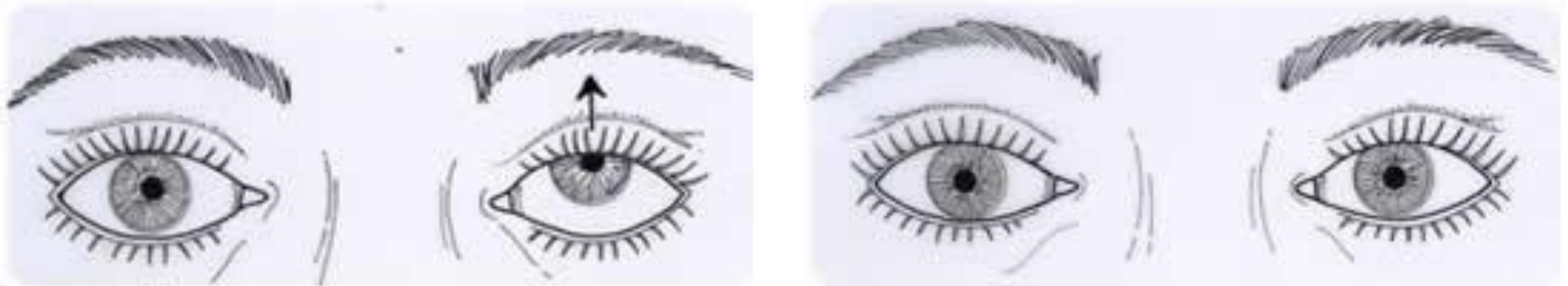
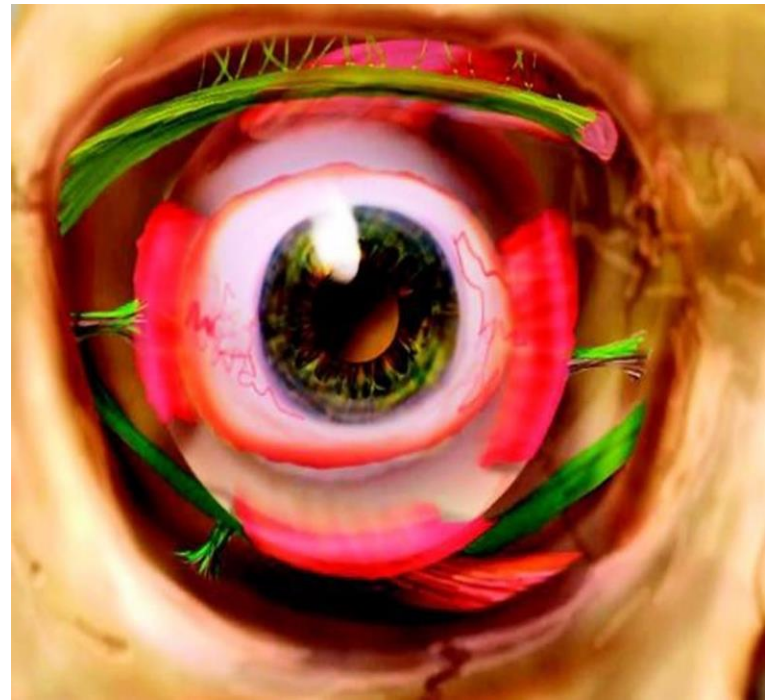
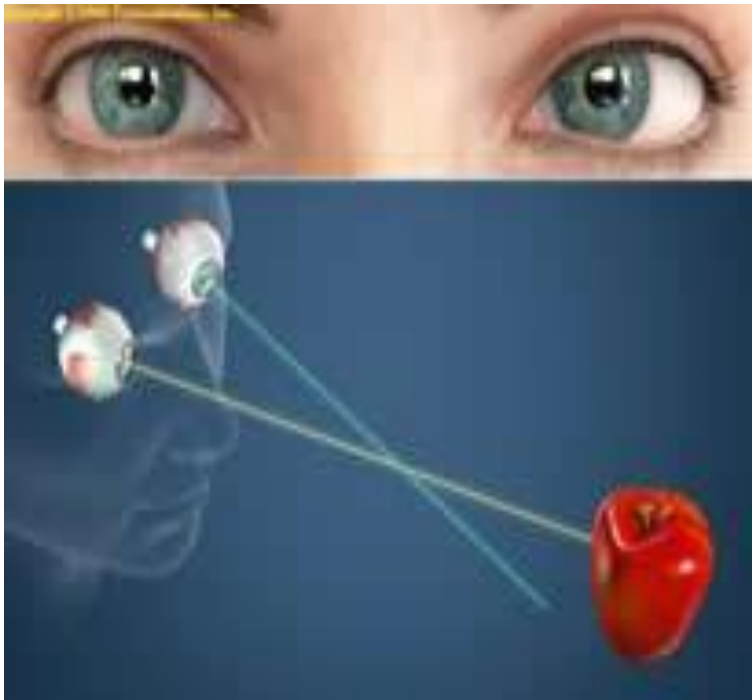


# Double Vision Due to Strabismus



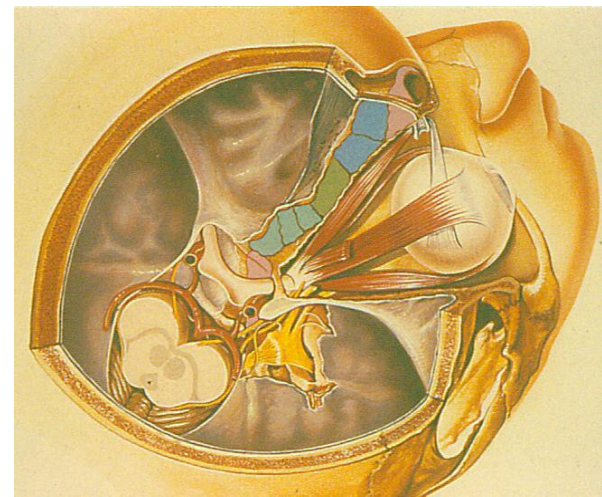
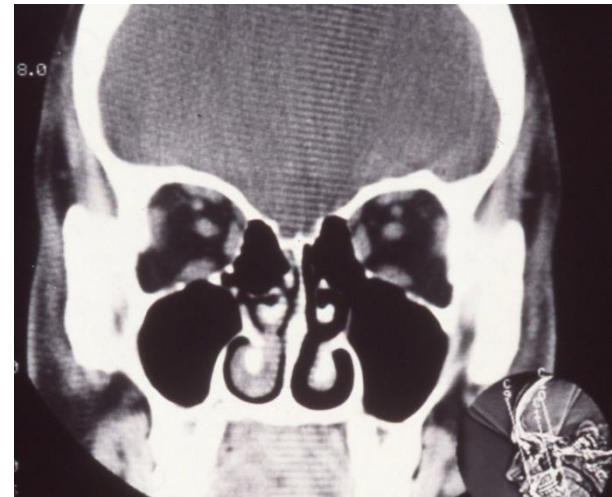
Kimberly Cockerham, MD, FACS

If the eyes are not aligned, you will see a blur or double image.



# Why Do I See Double ?

- **Extraocular muscle**
  - Enlargement (Thyroid Eye Disease)
  - Scarring (fibrosis)
- **Neuro-muscular junction problem**
  - Myasthenia Gravis
- **Brain Issue**
  - Altered vision breaks fusion



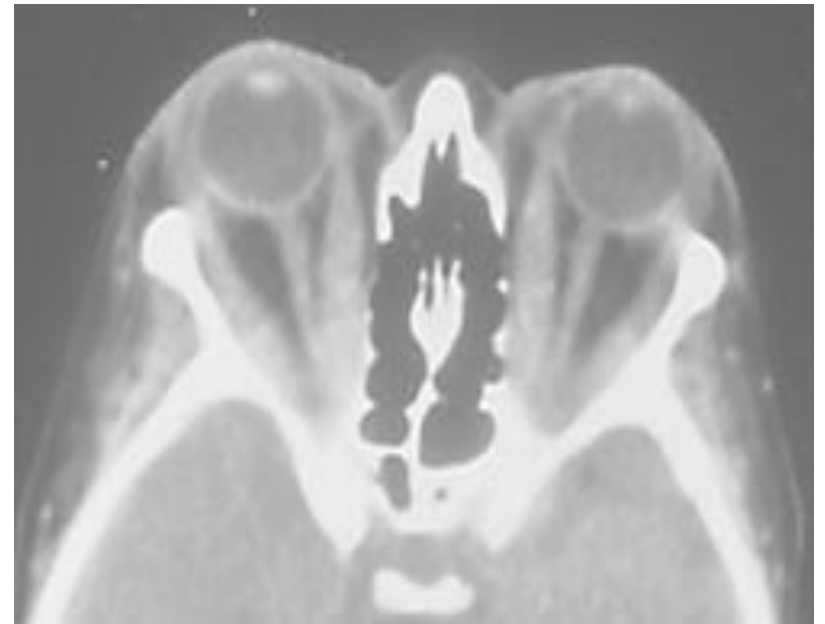
# Pre-Operative Testing

- Vision
- Color vision
- Visual field
- Eye movements
- Imaging with CT or MRI

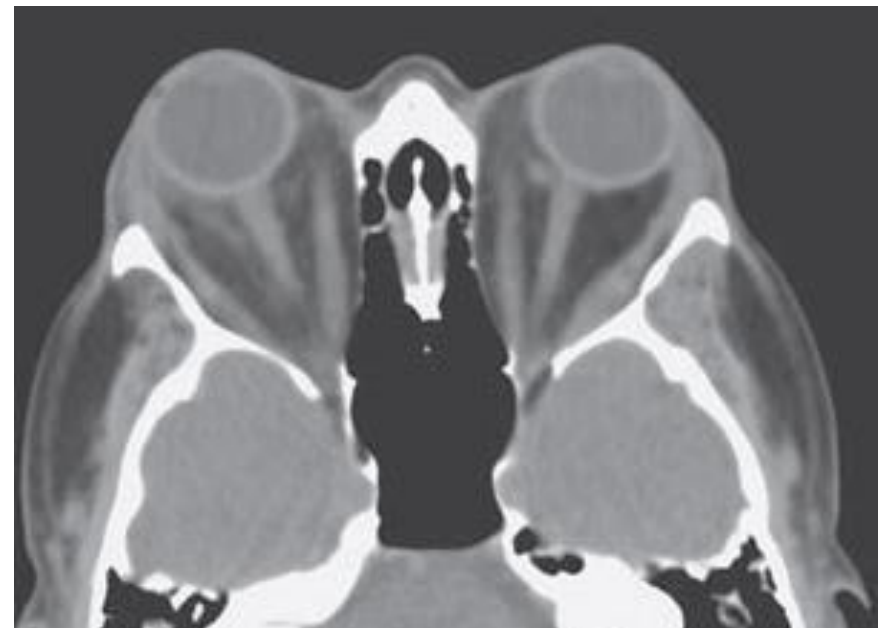


# Photos in all cardinal gazes





AXIAL CUTS of  
enlarged ocular  
muscles



# Informed Consent

## ■ Common:

- Redness
- Foreign body sensation
- Tearing
- Mucous

## ■ Uncommon

- Persistent or worsened double vision or drifting
- Bleeding
- Infection
- Suture breakage
- Need for Botox or additional surgery

